

ANNEXURE B

**MIDVAAL
LOCAL MUNICIPALITY**

Tel: (016) 360 7500 / Fax: (016) 362 2632 / E-mail: www@midvaal.gov.za

**DISASTER
MANAGEMENT
PLAN**

Preliminary

**MUNICIPAL MANAGER
MR. ASA DE KLERK**

**TEL: (W) (016) 360 7411
CELL: 082 771 8961**

**ALDERMAN MARTI WENGER
EXECUTIVE MAYOR**

**TEL: W) (016)-360 7418
CELL: 083 226 5226**

INDEX

CODE	DESCRIPTION	PAGE
	Definition, primary function of Disaster Management	1-2
	Risks	2
	Risks cont... and Types of Natural Disasters	3
	Prevention and Mitigation	3
	Mitigation cont..., Advisory Forum, Purpose of the plan Disaster Analysis and Consequence	3-5
	When Disasters happen, our plan structured (start)	5
	Midvaal Proposed Control Room	5
	Midvaal Municipal Structure (Purpose: to inform of command structure)	6 / 13
	Emergency Numbers (Purpose: To inform of numbers to be contacted)	14
	Doctors / General Practitioners (Purpose: To inform of numbers to be contacted)	14
	Internal & External Radio Network & Call Signs (Purpose: to give JOC Official access to call signs of staff on hand held radios)	15
	Key Personnel Call Signs (same as 15)	15
	Key Personnel Call Signs cont...(same as 15)	16
	Key Personnel Call Signs cont... and Support Services (as 15)	17 / 21
	Midvaal Farmers / Civil Defence / FPA,s(Support)	20
	JOC (Joint Operations Center) and Urban and Rural	22
	Urban and Rural (Support)	23
	Wards Urban and Rural (Support)	23
	Provincial and State Institutions (Support)	23
	Road and Rail Network (Network in and out of Midvaal)	24
	Assistance Agreements	24
	Support Assistance	24
	Emergency Hospitals	24
	Teaching Institutions / Temporary Shelter / Emergency Hospitals	24
	Teaching Institutions cont...	25
	Churches / Temporary shelters.	25
	Churches cont...	25
	Businesses / Food Stores (Food supplies etc.)	25
	Areas	25
	Population / Topography / Historical Places and Places of interest	25
	Warnings and Procedures (What to do...)	26-29
	Definitions	29-30
	Notifiable Diseases.	30
	Identification of Equipment, Manpower and Resources	31

MIDVAAL

DISASTER MANAGEMENT

What is defined as a disaster?

A **Disaster** is any event that happens with or without warning causing or threatening death or injury, damage to property, infrastructure or the environment or disruption to the community, which exceeds the ability of an affected society to cope using only its own resources.

Emphasis is not MAGNITUDE calculated in terms of numbers or monetary value but on capacity or coping ability.

Disaster Management

Disaster Management is a continuous and integrated multi-sectoral, multi-disciplinary process of planning of measures that would prevent disasters. Measures must be put into place after the planning phase to eliminate the risk or prevent risk factors from materializing. Other areas that need to be addressed are mitigation, preparation, response, recovery and rehabilitation.

The responsibility for the implementation of the plan is that of the Head of Disaster Management (MM) in accordance with the Act (Disaster Management Act 57 of 2002)

The Disaster Management Act requires Municipalities to:

- Prepare a disaster management plan for its area according to the circumstances in their area.
- Co-ordinate and align the implementation of the plan with those of other role-players and organs of state.
- Regularly review and update the plan.

Copies of the plan, and updates as well as amendments should be forwarded to the District Disaster Management Centre and must form part of the Municipalities IDP.

The plan must further:

- Anticipate types of disasters that might occur in the Municipal area and their possible effects
- Identify who will be at risk
- Be prepared for effective and appropriate prevention and mitigation
- Activate effective and efficient and prepared emergency response
- Establish an emergency management framework for the utilization and mitigation of any significant disaster or emergency within the municipal area.
- Establish concepts and procedures for responding to emergencies.
- Contain contingency plans and emergency procedures in case of a disaster providing for:
 1. Prompt response and relief
 2. Allocation of responsibilities to role players
 3. Disaster recovery and rehabilitation
 4. Establishment of communication links
 5. Procurement of essential goods and services.
 6. Dissemination of information.

The primary function of Disaster Management in the event of a disaster is:

- Activation of relevant role-players in a central communication and co-ordination centre (JOC)
- Activation of community and other recourses
- Co-ordinated response and the facilitation thereof.
- Guidance, advice and provision management information
- Liaison with other role players i.e. District, Provincial and National Disaster Management Centres

RISKS

Health Risks

Health Risks / ALSO SEE PAGE: 30 after Definitions for Notify able diseases.

1. HIV / AIDS – High Risk
2. TB – High risk
3. Flu Mutations – Med to High Risk
4. Sexually transmitted Infections – Med to High Risk
5. SARS – Travellers
6. Rabies – Low Risk
7. Malnutrition – Low to Med Risk
8. Pollution – Med to High Risk – Rural – Winter
9. Bee Stings – Low Risk
10. Snake Bites – Low risk but exists.

Transport Risks

1. Taxi Accidents – High Risk – Holliday Seasons / Med Risk Other times
2. Bus Accidents – Med to Low Risk
3. Train Accidents – High Risk / Transportation of Hazardous
4. Truck / Tanker Accidents –High Risk
5. Motor Vehicle & Cyclist Accidents – Med Risk
6. Pedestrians – Med Risk.
7. Aviation Accidents – High Risk- Stacking

Essential Services and Support Infrastructure _____

1. Electricity – Med to High risk – Rural Areas
2. Sewerage – Med to High Risk- Rural Areas
3. Water – Med to High Risk- Rural Areas
4. Housing – Med to High Risk
5. Clinics – Med Risk
6. SAPS – High risk
7. SADF- Low Risk
8. Emergency Services – Med to High Risk – Rural Areas /
9. Financial Risks
10. IT Risks
11. HR Risks

Communities in informal settlements are most vulnerable to many types of risks including those of the proximity of certain or hazards and installations and or networks.

Local Municipalities are at risk especially in the areas of finance, IT and HR in Disaster situations and other threats like massive strikes, system failures etc.

Fires

1. Domestic Fires – High Risk – Rural – Winter
2. Industrial Fires – Med to High Risk
3. Hazardous Materials – High Risk – Tankers (Trucks and Trains)
4. Veld and Bush Fires – High Risk – Winter – Rural Areas – Game Farms
5. Explosions / Sabotage – Med to High Risk – Pipelines- Reservoirs

Types of Natural Disasters

1. Urban Flooding / Heavy Downpours – Med Risk – Rivers and Streams
2. Rural Flooding – Med Risk – Rivers and Steams
3. Hail Storms – Med Risk / Thunderstorms
4. Draught – Med Risk
5. Sink Holes, Landslides and other similar risks – Med Risk – Old mine shafts.
Etc.
6. Windstorms and whirlwinds – Med to High – Rural

Other Risks

1. Taxi Violence – Med to Low Risk
2. Labour unrest and Strikes – Med Risk
3. Racial Conflict – Med to Low risk
4. Mass Murders and Hostage Dramas – Med risk
5. Sabotage – Med to High Risk
6. Political Unrest – Med Risk
7. Vandalism – Med Risk
8. Crime – Med Risk
9. Poverty – Med to High Risk
10. Unemployment – Med to High Risk
11. Air Disasters- Med to High Risk

Prevention and Mitigating Strategies

The Disaster Management framework of Midvaal will aim to meet the following requirements:

Public Information, Education and Relations Programs: This can go a long way in preventing many preventable disasters.

Regular testing of water, immunisations, testing roadworthiness of vehicles and over load control, hazardous substance pre-planned routes and overload control and awareness, regular maintenance of electrical and sewerage systems and early warning systems, building regulation adherence, upgrading of clinics, upgrading of Emergency Services and support services, tree planting in windy areas, CPF systems, liaison with SAPS and poverty elevation could prove valuable in the prevention of preventable disasters.

Integration of the disaster plan into the IDP's

Engineering studies for elevation of geographical and physical problems should be undertaken for long-term solutions.

DISASTER MANAGEMENT ADVISORY FORUM

Midvaal Local Municipality has established a forum where all departments within the Council give inputs at regular meetings.

This forum will aim to ensure an integrated and common approach to disaster management in the municipal area as well as keeping the plan updated.

Contributions from the different departments will be included in the plan.

The purpose of the disaster management plan is to establish a framework for implementation of the related provision of the Municipal Systems Act as well as the provisions of the Disaster Management Act.

DISASTERS ANALYSIS AND CONSEQUENCES

All disasters have basically the same combined consequences and effects.

CONSEQUENCES

Injuries, epidemics and death.
 Entrapments, rescues and fires.
 Disruption of people / persons.
 Disruption of emergency / essential services.
 Disruption of labour and the economy.
 Disruption of management and administration.
 Damage to property

ANALYSIS

Injuries, Epidemics and Death.

The institutionalised and manning of emergency posts.
 The establishments of forward command post and CCC's
 The identification and triage of sick / injured.
 Emergency Medical Care on scene Paramedics / Doctors / Nurses etc.
 Transfer and transport of the sick / injured.
 Hospitalisation.

Discharge of minor cases from hospitals.
 Support services.
 Immunisation.
 Supervision and control of aid.
 The identification and storage of bodies.
 Burials and mass burials.

Entrapment of Animals and People in Fires.

Fire in buildings, industries and strategic institutions.
 Fire spread over a large area.
 Water and power disruption.
 Rescue work at emergency scenes.

Disruption of People / Persons

The co-ordination of all affected people at emergency scenes
 Support services co-ordination.
 The transfer and transport, housing of effected people
 Physical care of effected people.
 Community services of effected people.
 Public liaison including tracing and re-uniting of families.
 Co-ordination of salvage operations.

Disruption of Essential Services

Damage to reservoirs and reticulation systems.
 Damage to sewage system installations.
 Damage to electrical supplies.
 Damage to road and rail networks.
 Disruption of communication.
 Disruption of traffic.
 Disruption of refuse removal.

Unpreventable Disasters **(Emergency Management Framework)**

The plan (framework) serves to enable stakeholders to effectively communicate at times of Disaster

Midvaal Local Municipality

Proposed Control room / JOC

Municipal Managers Office / Boardroom./ Council chambers
 Or Board Room of the Fire and Rescue Services.

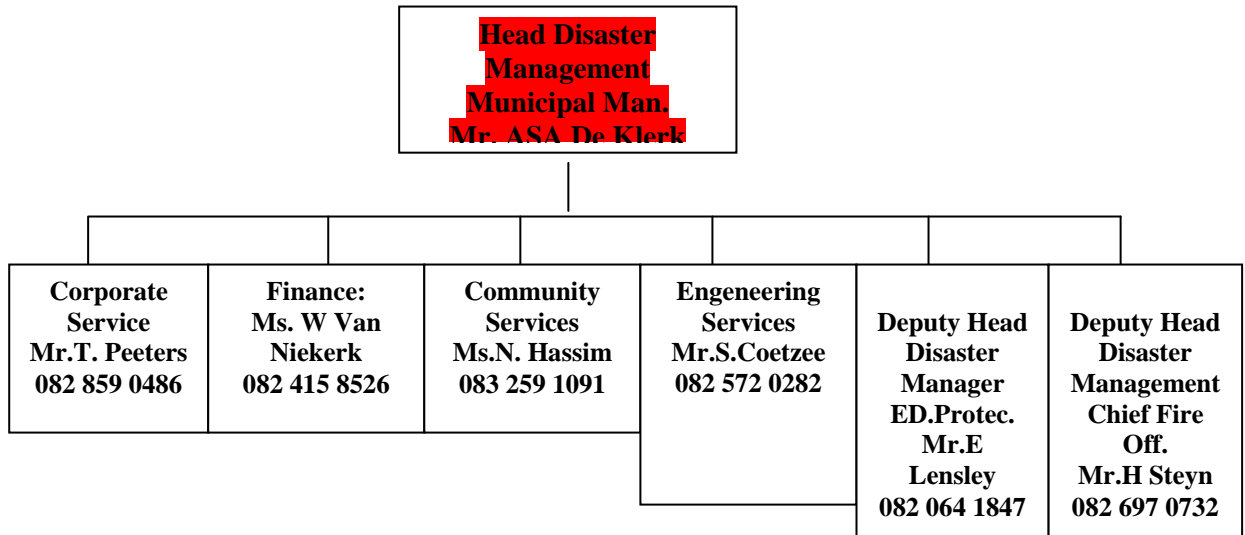
Sedibeng Disaster Management Centre: Mr. Pieter Nieuwenhuizen cell: 082 901 5726

Emergency Numbers: 016-440-1000.

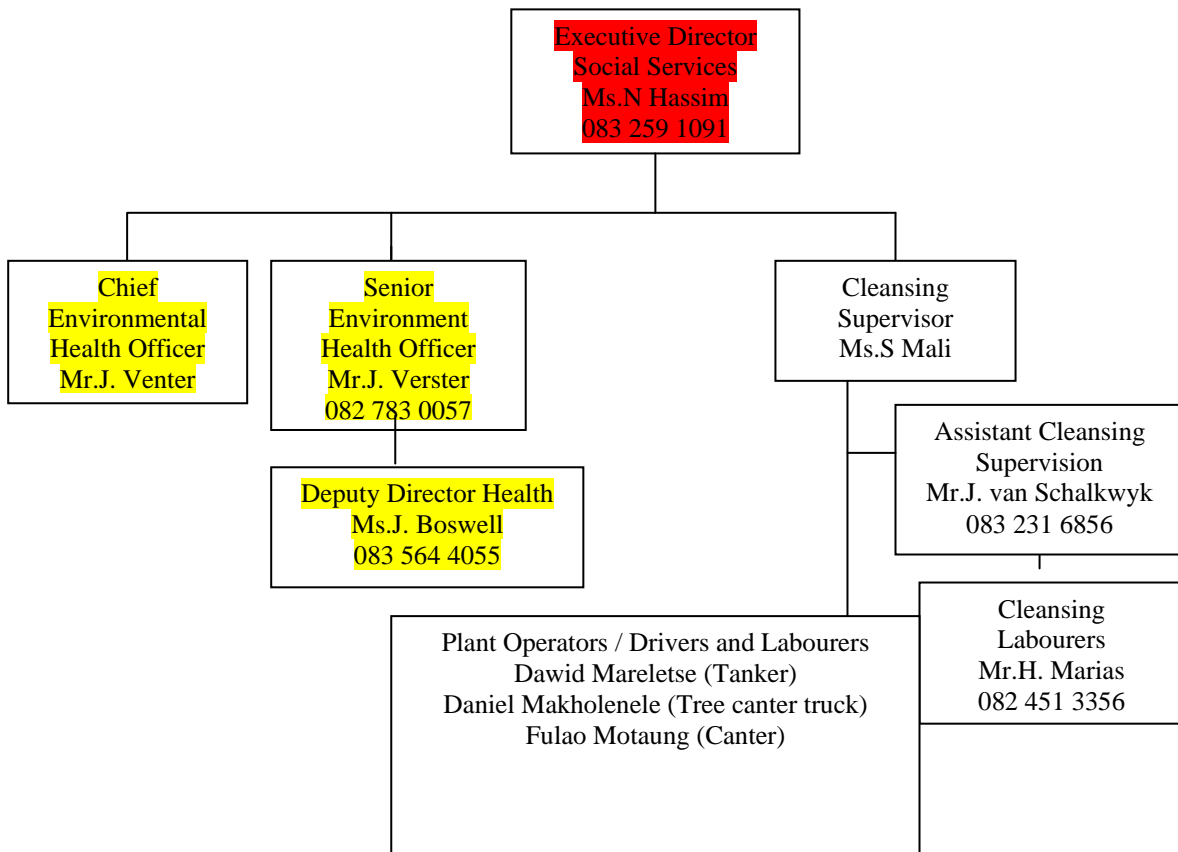
MUNICIPALITY TOP STRUCTURE

Red = person in charge

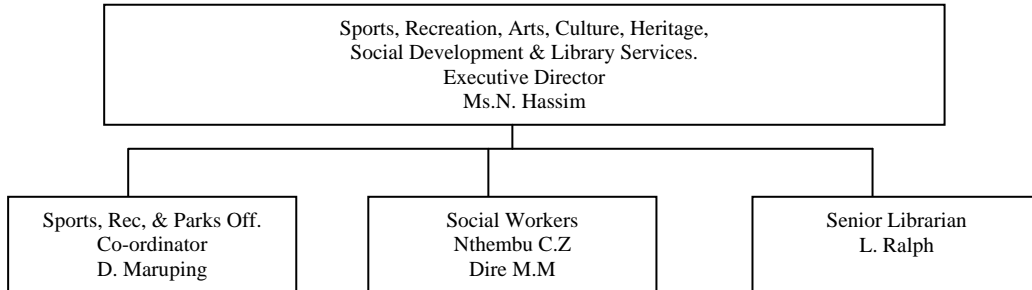
Yellow = 2nd in charge



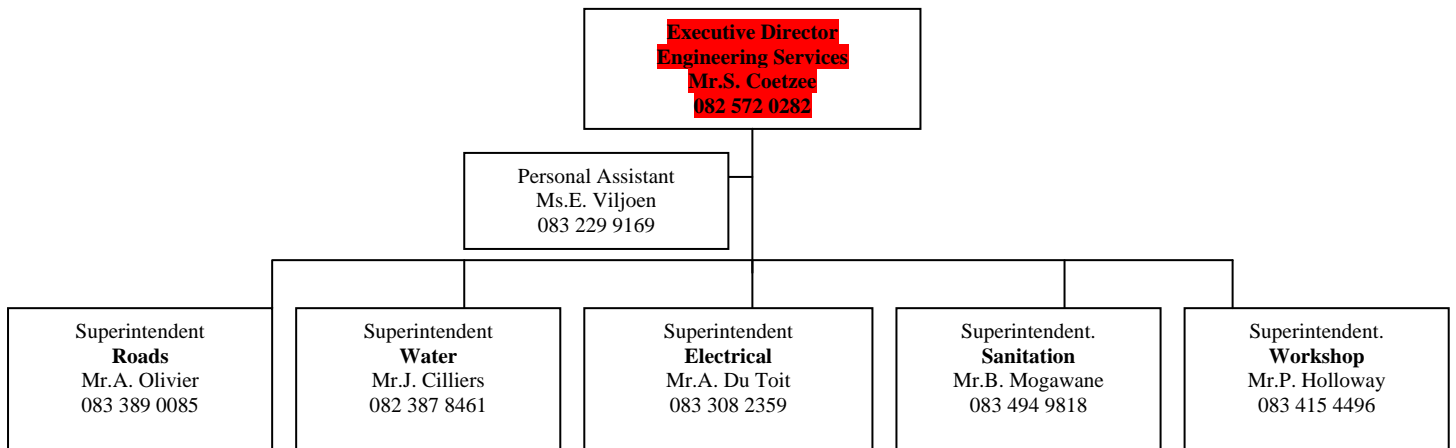
Department Social Services
Section: Health & Waste Management



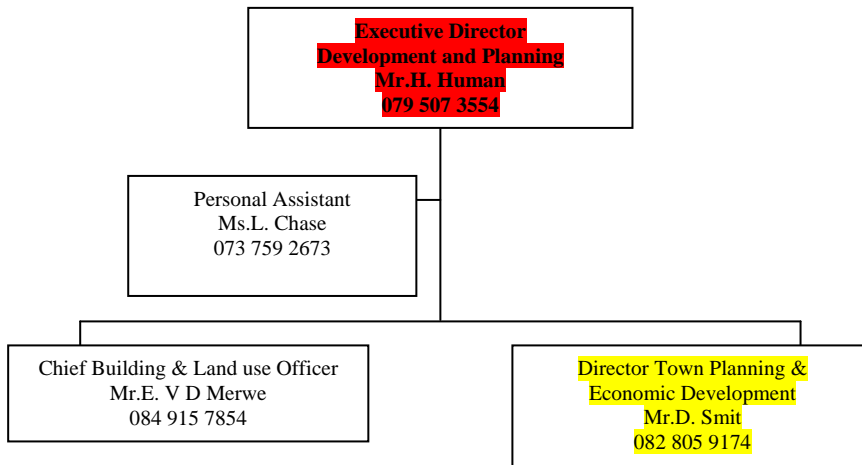
Department Community Services
Section: Sports, Recreation, Arts, Culture, Heritage,
Social Development & Library Services.



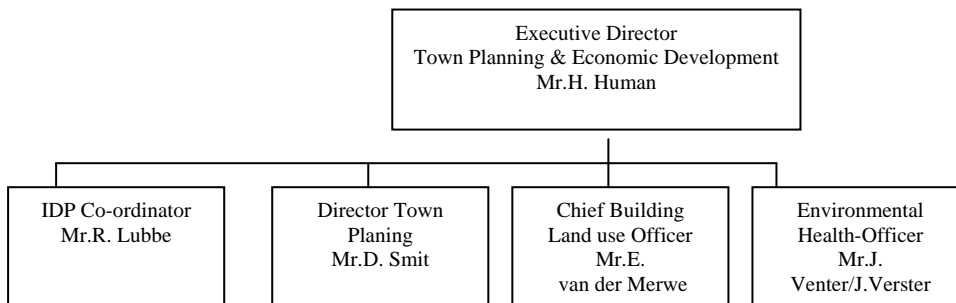
Engineering Services



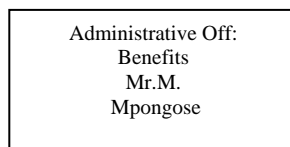
D&P



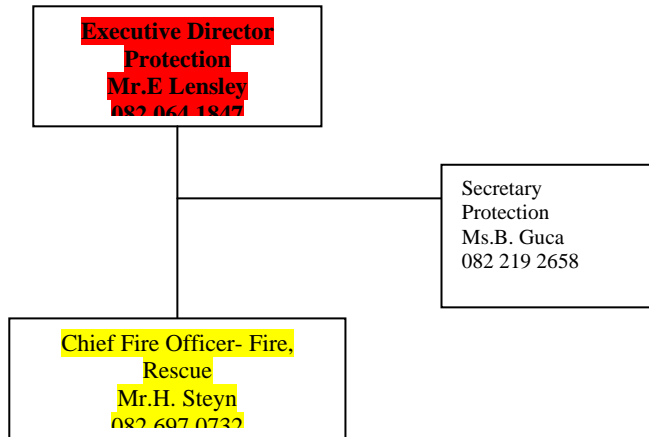
Town Planning & Economic Development



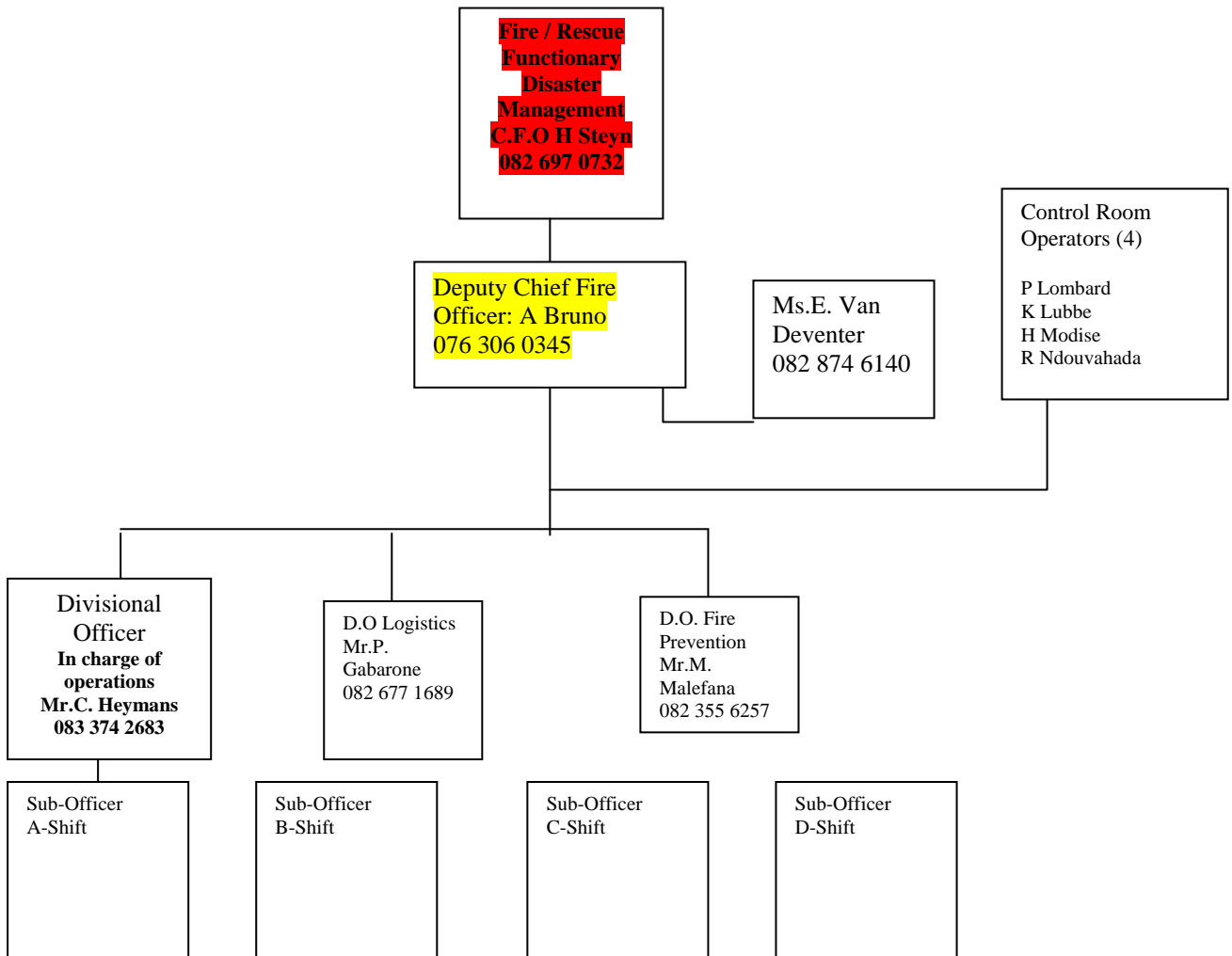
Housing



Public / Safety and Security (Protection Services)



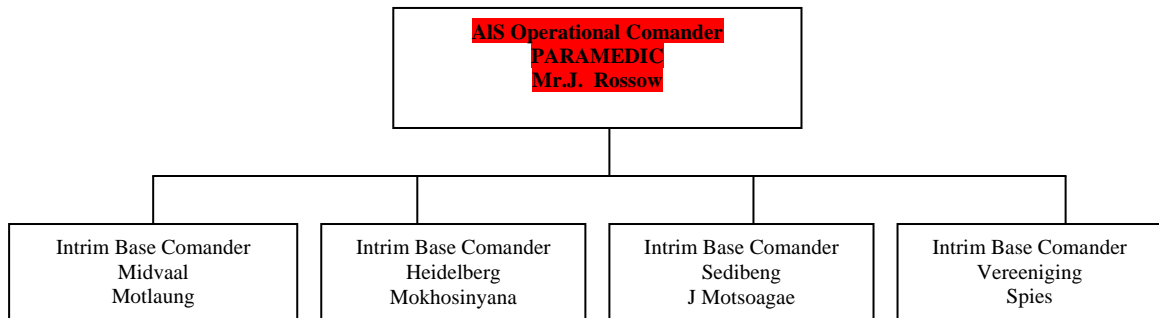
Fire and Rescue



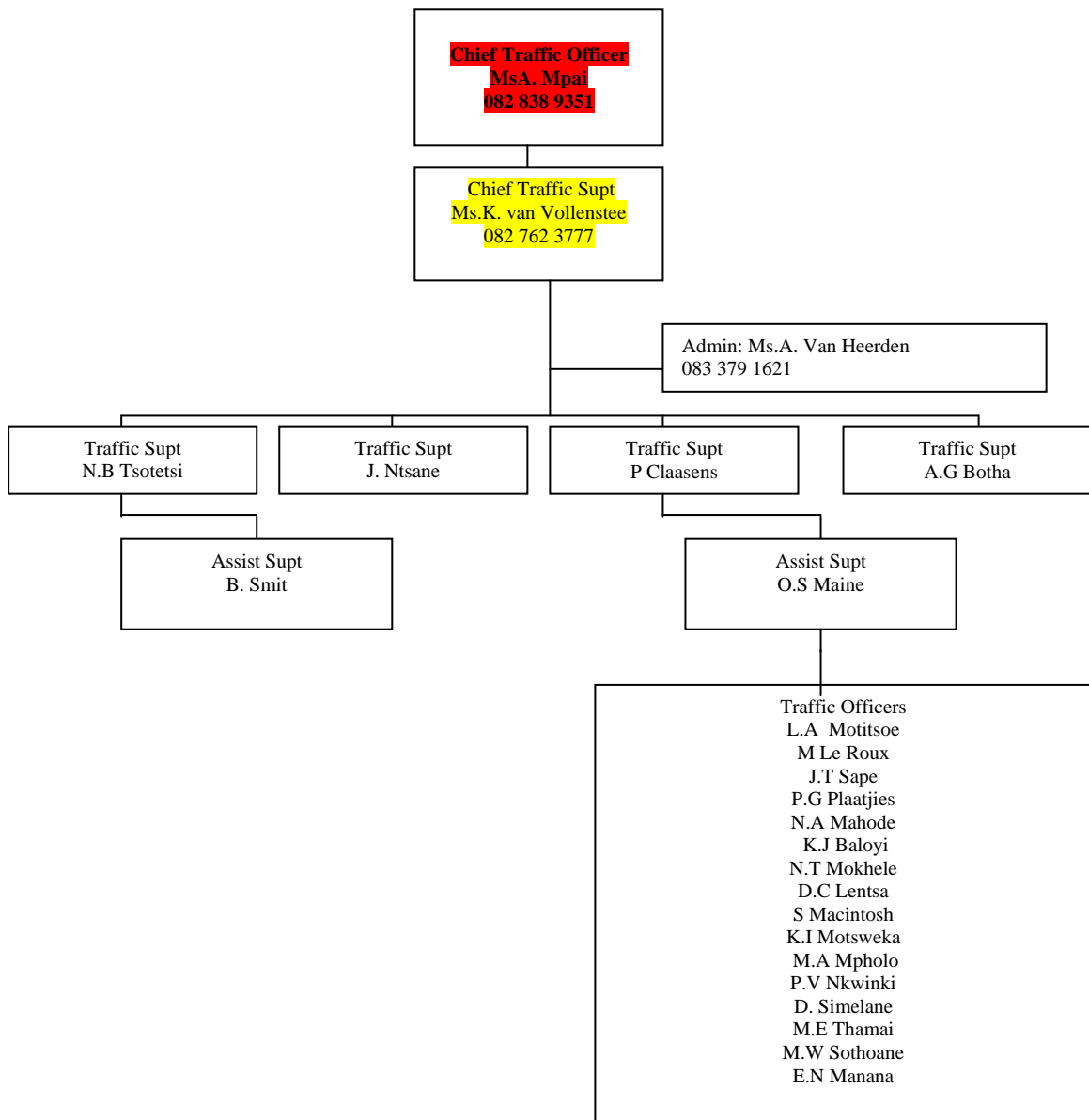
Emergency Medical Services

This Section forms an integral part of Fire and Rescue and operates from Midvaal but forms part of the Sedibeng District Council

Midvaal (Base) Structure

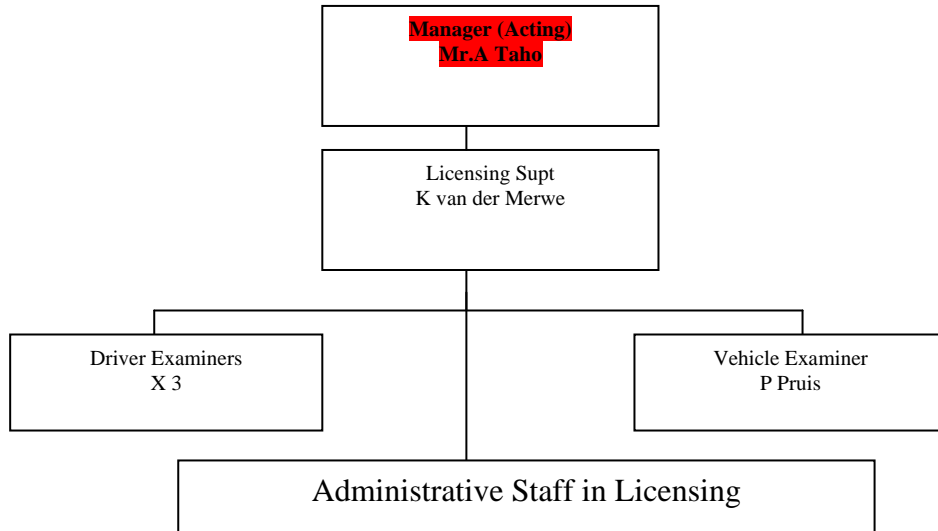


Traffic

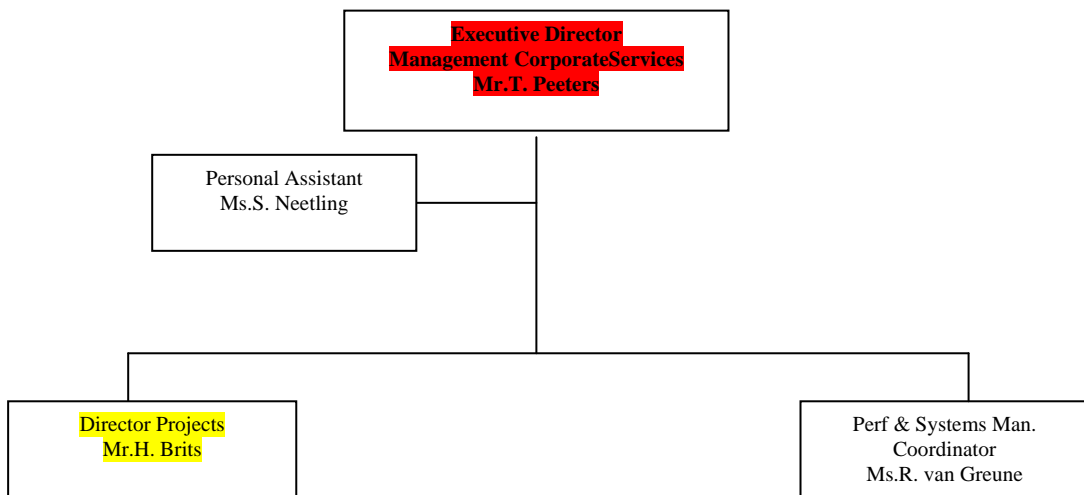


11

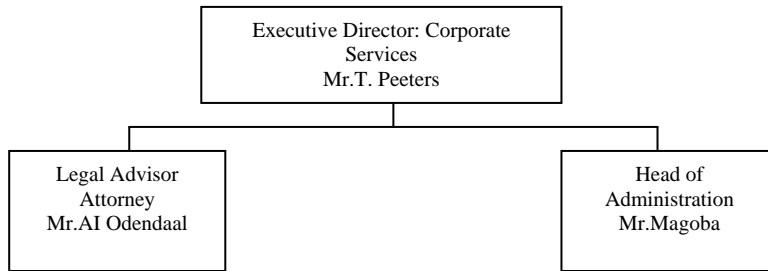
**Licensing:
(A Competency of the Sedibeng District Council)**



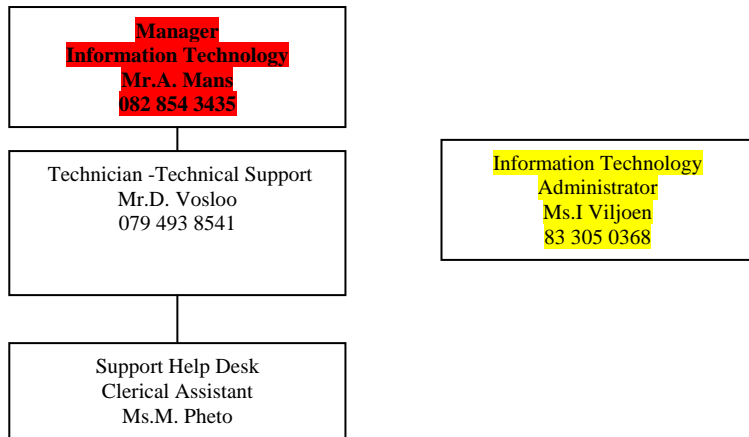
Management Corporate Services



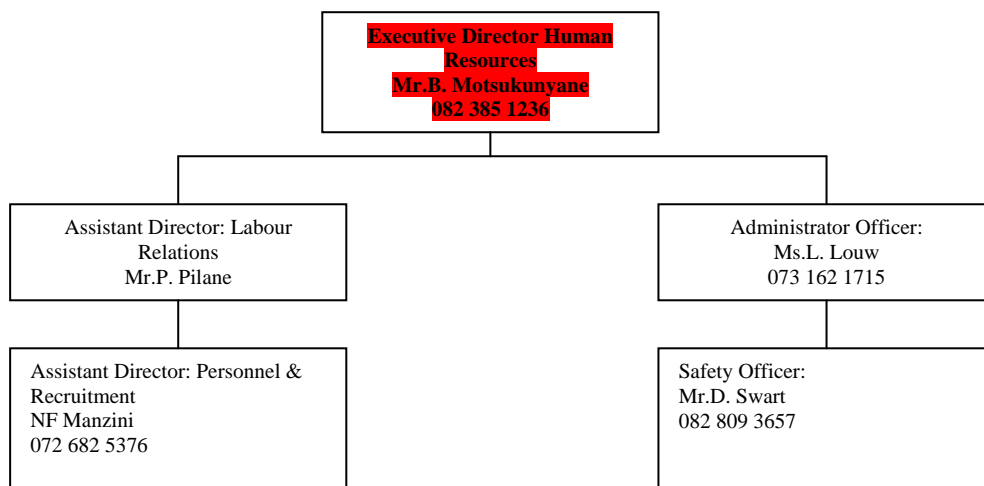
Corporate and Legal Services



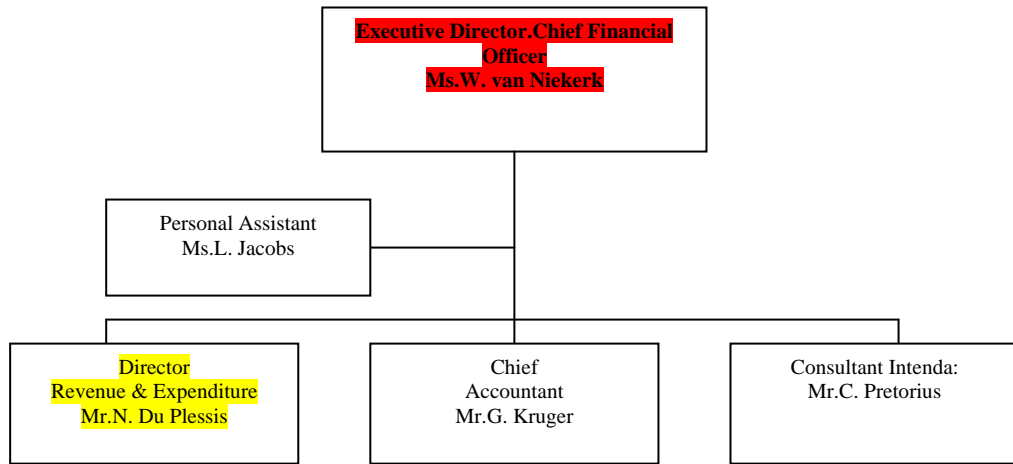
Information Technology



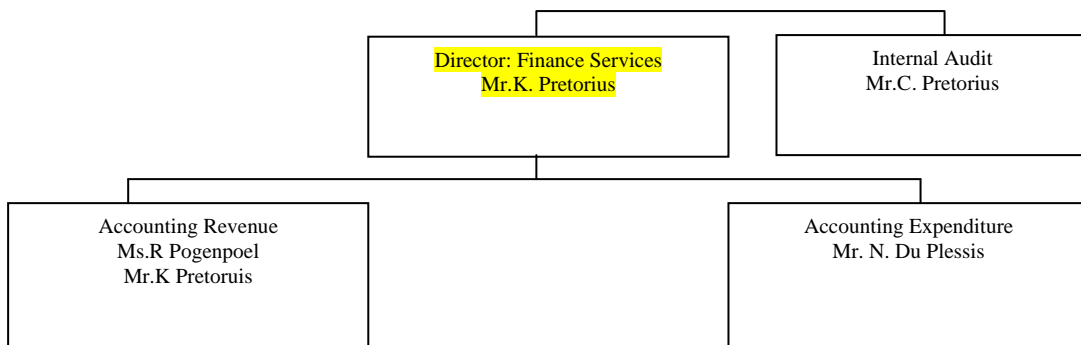
Human Resources



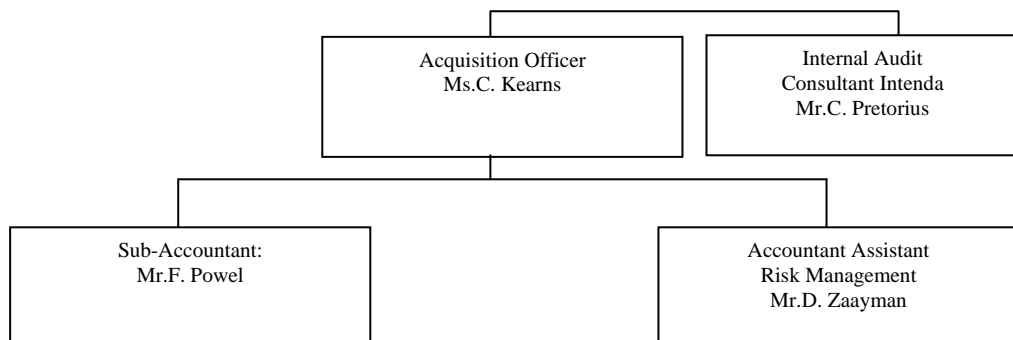
13 Finance



Revenue & Expenditure



Accounting



EMERGENCY NUMBERS

A.

INSTITUTION NAME	NUMBER
Fire and Rescue Services /	016 360 7500 / 7503
Emergency Medical Services / Sedibeng	016- 341- 4327 / 10177
SAPS / Meyerton	016 362 0903
SAPS De Deur	016 590 1070
SAPS Kliprivier	011 903 8205
A. G. Visser Hospital	016-341- 1100
Suikerbos Hospital	016-349 -2431
Manager / Chris van Wyk	084-666-1044
Hospital Supt / Matron Olivier	083-305-6878
Kopanong Hospital	016 428 7000
Sebokeng Hospital	016 930 3000
Medi City	016 440 5000
Medi Cross	016 454 7025
Traffic Control / Midvaal	016 360 7503
Gautrans Traffic Services	016-340-4000
Water and Electricity ESKOM	016 630 7400 086 003 7566
Disaster Management / Midvaal	016 360 7500/ 7503
Disaster Management / Sedibeng District	016-440-1004
Mr. Pieter Nieuwenhuizen / Manager Disaster Management Sedibeng District Council	082 901 5726
Netcare	082 911

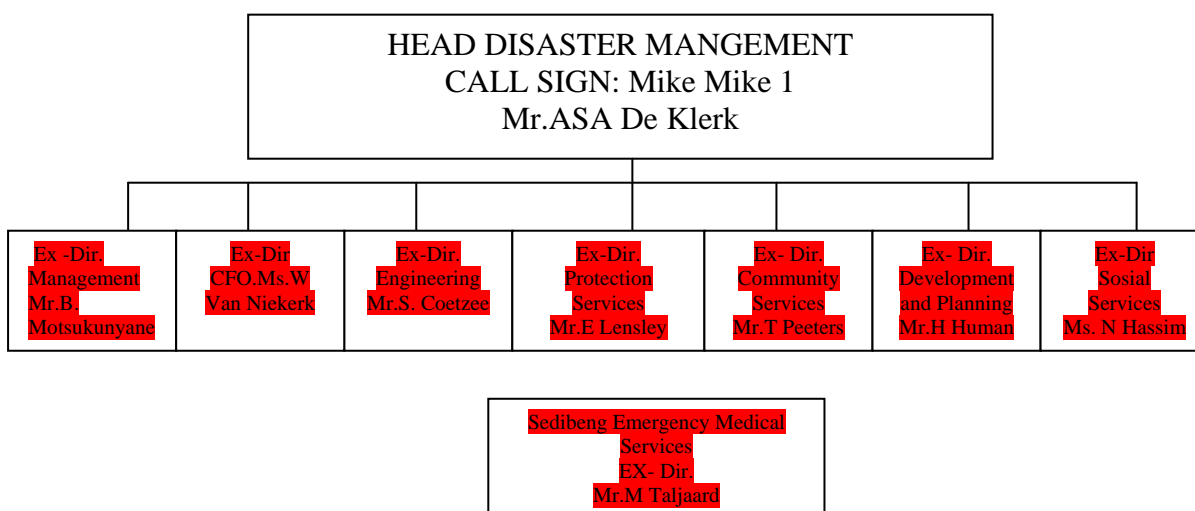
DOCTORS / GENERAL PRACTITIONERS

Dr. Botha	016 362 2799	Golf Park
Dr. Mako	016 455 1755	Vereeniging
Dr. Engelbrecht	082 892 3030	Meyerton
Dr. Oelofse	016 423 3786	Vereeniging
Dr. Soldin	016 362 3553	Meyerton
Dr. Magagula	016 450 3184	Vereeniging
Dr. Breytenbach	016 423 2093	Vereeniging
Dr. C. Harmse	016 455 1145	Vereeniging
Dr. C Church	016 362 0803	Meyerton
Dr. Maree	016 362 0305	Meyerton
Dr. Lain	016 455 1145	Vereeniging
Dr. Harmse	016 440 5440	Vereeniging
Dr. Mako	016 414 2888	Vereeniging
Dr. Engelbrecht	016 362 1005	Meyerton
Dr. Gouws	016 362 0616	Meyerton

B. INTERNAL & EXTERNAL RADIO NETWORK & CALL SIGNS

FIRE, RESCUE & SERVICES / BRAVO MIKE CHANNEL 1
 SEDIBENG EMERGENCY MEDICAL SERVICES CHANNEL 64
 GAUTRANS TRAFFIC INSPECTORATE CHANNEL 31 Marnett

INTERNAL



KEY PERSONNEL CALL SIGNS

Administration

Municipal Manager	Mike Mike & 082 771 8961
Executive Director Corporate Services	Charlie Sierra & 082 859 0486
Caretaker Buildings	Charlie 1 & 083 897 2561
CFO	Charlie Foxtrot & 082 415 8526

Fire and Rescue Services / Ex Man Protection Services**Bravo Mike / Control Center**

Mr. E Lensley	Oscar Mike 1 & 082 064 1847
H Steyn	Oscar Mike 2 & 082 697 0732
A Bruno	Oscar Mike 3 & 076 306 0345
C Heymans	Oscar Mike 6 & 083 374 2683
P Gabarone	Oscar Mike 5 & 082 677 1689
M Malefane	Oscar Mike 4 & 082 355 6257

Emergency Medical Service / Sedibeng / Manager: Mr. Taljaard (Echo Delta Mike)

Contact number: 082 905 5935

Call Signs:

Logistics / Moodly	Echo Mike Sierra 2 Cell: 083 291 1777
Ops Support / Louis	Echo Mike Sierra 4 Cell: 082 852 1940
Ops E.M.S J Rossow	Echo Mike Sierra 1 & 016 440 1046
/ Shift Officer	
/ Shift Officer	Call Sign & Contact numbers
/ Shift Officer	
Wayne Botes/ ILS Officer	Echo Mike Sierra 3 & 082 889 6589
/ ILS Officer	Call Sign & Contact numbers
	Call Sign & Contact numbers

Electricity

Attie Du Toit	Echo 1 & 083 308 2359
Leon Botha	Echo 2 & 083 734 7560
	Call Sign & Contact numbers

Health (Social Services)

Naz Hassim	Sierra Sierra 083 259 1091
Jenny Boswell	Hotel 1 & 083 564 4055
Jaco Venter	Hotel 2 & 082 927 7569
Jaco Verster	Hotel 3 & 082 783 0057
	Call Sign & Contact numbers

Town Engineers

Stef Coetzee	Echo Sierra & 082 572 0282
Ben Murphy	Echo Alfa 1 & 082 513 3148
Waldo Schirge	Echo Alfa 2 & 083 296 5874
	Call Sign & Contact numbers
	Call Sign & Contact numbers

Roads & Stormwater

Andre Olivier	Romeo 1 & 083 389 0085
George Kymdell	Romeo 2 & 082 782 7410
Abraham Moghsi	Romeo 3 & 072 715 1449
	Call Sign & Contact numbers
	Call Sign & Contact numbers

Water

Jannie Cilliers	Whisky 1 & 082 378 8461
Alf Rudman	Whisky 2 & 082 211 4305
	Call Sign & Contact numbers

Sewer

Buang Mogawane	Sierra 1 & 083 494 9818
	Call Sign & Contact numbers
	Call Sign & Contact numbers

Mechanical Workshops

Pieter Holloway	Mike Whisky 1 & 083 415 4496
Gerhard Pretorius	Mike Whisky 2 & 083 660 5722
	Call Sign & Contact numbers
	Call Sign & Contact numbers

Treasury

Wilna van Niekerk	Charlie Foxtrot & 082 415 8526
Gerhard Kruger	Foxtrot 1 & 082 875 2728
	Call Sign & Contact numbers

Traffic**Victor Mike / Offices**

Anna Mpai	Charlie Tango 1 & 082 838 9351
Karen Van Vollenstee	Victor 1 & 082 762 3777
Phillip Claasens	Tango 1 & 084 250 2000
Billy Tsotetsi	Victor Alpha 1 & 072 444 4848
Billy Smit	Victor Alpha 2 & 082 406 1786
Aubrey Botha	Victor 3 & 076 897 5710
Alfred Mdakane	Bravo Lima 1 & 082 948 7341
Ouman Maine	Tango 2 & 073 154 1671

Fire and Rescue Control Center

Call Sign & Contact numbers

Call Sign & Contact numbers of Radios that will be hand out from the Incident Command Centre. (JOC)

Mike Delta 1	
Mike Delta 2	
Mike Delta 3	
Mike Delta 4	
Mike Delta 5	
Mike Delta 6	
Mike Delta 7	
Mike Delta 8	
Mike Delta 9	
Mike Delta 10	
Mike Delta 11	
Mike Delta 12	
Mike Delta 13	
Mike Delta 14	
Mike Delta 15	
Mike Delta 16	
Mike Delta 17	
Mike Delta 18	
Mike Delta 19	
Mike Delta 20	

CALLSIGNS
MIDVAAL FIRE

E.LENSLEY	EXECUTIVE DIRECTOR	O.M.1
H.STEYN	CHIEF FIRE OFFICER	O.M.2
A.BRUNO	DEPUTY CHIEF FIRE	O.M.3
M.MALEFANE	D/O FIRE PREVENTION	O.M.4
P.GABARONE	D/O TRAINING	O.M.5
C. HEYMANS	D/O OPERATIONS	O.M.6

V. CAMPHER	SENIOR FIREFIGHTER	V.C
J.RAMODIBE	SENIOR FIREFIGHTER	J.R
B.MOLATO	JUNIOR FIREFIGHTER	B.M
S.MAMATELA	SENIOR FIREFIGHTER	S.M
O.ZULU	JUNIOR FIREFIGHTER	A.Z
J.MOTLOUNG	SENIOR FIREFIGHTER	J.M
J.MAHANYA	SENIOR FIREFIGHTER	K.M
T.ENGELBRECHT	SENIOR FIREFIGHTER	T.E
P.KHOTA	SENIOR FIREFIGHTER	P.K
P.LEHOKO	SENIOR FIREFIGHTER	P.L
J.HANYANE	SENIOR FIREFIGHTER	H.A
J.PHADI	SENIOR FIREFIGHTER	J.P
G.VAN STADEN	SENIOR FIREFIGHTER	G.V.S
P.MOFOKENG	SENIOR FIREFIGHTER	P.M
F.MOGALE	SENIOR FIREFIGHTER	F.M
P.MOTLOUNG	SENIOR FIREFIGHTER	M.P
G.BELLINGAN	SENIOR FIREFIGHTER	G.B
B.HLEKISO	JUNIOR FIREFIGHTER	B.H
F.ENGELBRECHT	JUNIOR FIREFIGHTER	F.E
E.PIENAAR	JUNIOR FIREFIGHTER	E.P
J.MAMATELA	JUNIOR FIREFIGHTER	R.M
T,MOREKI	JUNIOR FIREFIGHTER	T.M
S.PHAKHATHI	JUNIOR FIREFIGHTER	S.P
A.MONTLE	JUNIOR FIREFIGHTER	A.M
P.LEPUTU	JUNIOR FIREFIGHTER	A.L
J.MAKOLA	JUNIOR FIREFIGHTER	M.M
L.NGOEPE	JUNIOR FIREFIGHTER	L.N
E.MSIMANGO	JUNIOR FIREFIGHTER	E.M
T.MOKOENA	JUNIOR FIREFIGHTER	M.S
N.POONYANE	JUNIOR FIREFIGHTER	N.P
N. BIYANA	LEARNER FIREFIGHTER	N.B
D. PHEKO	LEARNER FIREFIGHTER	D.P
T. NTSANE	LEARNER FIREFIGHTER	T.N
E. KEAKITSE	LEARNER FIREFIGHTER	E.K
M. NKETLE	LEARNER FIREFIGHTER	M.N

20 Support Services

Civil Defence

Farming Community Heads /

Area **FPA 1**

Head: Pieter Brits 082 872 1392

Deputy Head:

Area **FPA 2**

Head: Jan Du Toit 083 751 6566

Deputy Head:

Area **FPA 3**

Head: Corne Kriek 083 273 4929

Deputy Head:

Area **FPA 4**

Head: James Grey 082 415 4595

Deputy Head:

The above persons are in contact via the MARNET radio and telecommunication with their respective teams. (Also see page 22 Urban and Rural)?

Confidential Information

MARNET RADIO

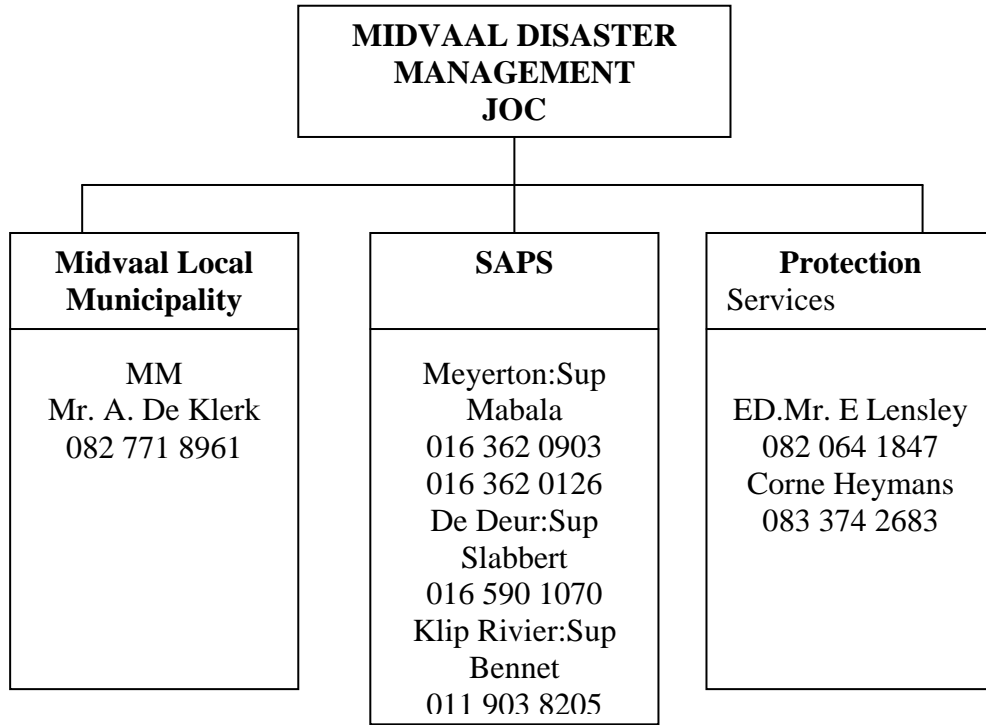
CALL SIGNS OF ADJACENT MAIN RADIO STATIONS. “?”

NR	S/N NUMBER	CALL	ISSUED TO	ADDRESS	TEL. NUMBER
1	019TFJ 2022	MP 1	MIDVAAL FIRE	CONTROL CENTRE	016-360 7500
2	019TFJ 2023	MP 2	MIKE BOTHA	PLAAS GOEDEHOOP	082 771 7932
3	019TFJ 2025	MP 3	VAN EEDEN.P	PLOT 117 MOOILANDE	082 779 3435
4	019TFJ 2030	MP 4	KOOS GROENEWALD	VISCHGAT VG14	082 335 5456
5	019TFJ 2060	MP 5	FLIP STRYDOM	STERKFORTEIN C14	083 651 4548
6	019TFJ 2062	MP 6	EVERT MULLER	BOSKOP B4	083 227 6364
7	019TFJ 2063	MP 7	KOBUS ROESTORF	BOSKOP A2	082 929 0188
8	019TFJ 2067	MP 8	JAN DU TOIT	BOSRAND B2	083 751 6577
9	019TFJ 2069	MP 9	E BLOCK WATCH	THREE RIVERS	082 322 4457

10	019TFJ 2074	MP 10	MARTIN MALAN	SCHOONGESIGHT	082 363 1773
11	019TGE 1018	MP 11	ERASMUS.A	VAALMARINA	082 552 6950
12	019TGE 0854	MP 12	IN SAFE	FPA 4	
13	019TFJ 2081	MP 13	CLAASSEN.K	ALWYNSPOORT	082 453 8595
14	019TFJ 2083	MP 14	DANTU.G	PLOT 83 ALWYNSPOORT	083 379 3552
15	019TFJ 2085	MP 15	JAMES GRAY	PLOT 85 ALWYNSPOORT	082 415 4595
16	019TFJ 2089	MP 16	RICK RODRIQES	PLOT 89 ALWYNSPOORT	
17	019TFJ 2091	MP 17	GROENDENNE SAPD	GROENDENNE FOURWAYS	10 111
18	019TFJ 2095	MP 18	KEET.BAREND	GOEDVERWAGT B4,5,9	082 550 5200
19	019TFJ 2097	MP 19	KEET.BAREND	GOEDVERWAGT B4,5,9	082 550 5200
20	019TFJ 2098	MP 20	KEET.BAREND	GOEDVERWAGT B4,5,9	082 550 5200
21	019TFJ 2099	MP 21	KEET.BAREND	GOEDVERWAGT B4,5,9	082 550 5200
22	019TFJ 2100	MP 22	IN SAFE	FPA 4	
23	019TFE 8376	MP 23	OLIVIER.P	PLAAS VAALBANK VAALMARINA	072 903 5144
24	019TFE 8410	MP 24	STEYN.DERRICK	STADIGFONTEIN	083 256 1374
25	019TFE 8418	MP 25	IN SAFE	FPA 4	
26	019TFE 8450	MP 26	CRONJE.W	BLESBOKSPRUIT BF6	082 890 7225
27	019TFE 8486	MP 27	IN SAFE	FPA 4	
28	019TFE 8490	MP 28	IN SAFE	FPA 4	
29	019TFE 8505	MP 29	PIETER NIEUWENHUIZEN	SEDIBENG DISTRICT COUNCILL	082 901 5726
30	019TFE 8547	MP 30	MCNABB.B	PLOT 57 HARTZENBERGFONTEIN	082 811 4548
31	019TFE 8549	MP 31	NEELS UYS	VAALMARINA	082 507 7929
32	019TFE 8567	MP 32	IN SAFE	FPA 4	

JOC

ORGANOGRAM



DISASTER MANAGEMENT Urban Rural

Provincial Disaster Management Center: Provincial Co-ordinators
V. De Beer / F. Buys
Cell: 082-394-3532

Head Disaster Management Sedibeng District Council
Mr. S Thlapolosa
Cell: 082 901 4310

Link between:
National Disaster Management and Emergency Services in SA.
Mr. Petrus Mosia
Cell: 082-770-2904
Alternative:
Cell: 083-400-8108

Assistant Disaster Management:
Operations, Strategic Planning, Logistics and Support.
Mr. P. Nieuwenhuzen
Cell: 082-901-5726

Disaster Management Control centre:
Me. D Mosoeunyane
Cell071 680 8435

Disaster Management Co-ordination and Liaison:
Me. S. Mathapo
Cell: 083-631-5095

Wards Urban and Rural

Chief Radio Communication: Mr.C. Heymans 083 374 2683	Chief First Aid:Sedibeng Ambulance 016 440 1000 Netcare 082 911	Chief Fire Fighting: Mr.H. Steyn 082 697 0732	Chief Traffic Control: Ms.A. Mpai 082 838 9351	<div style="border: 1px solid black; padding: 5px; text-align: center;"> Ambulance School Bus </div>
--	--	--	---	--

PROVINCIAL AND STATE INSTITUTIONS

SAPS	Meyerton SAPS situated in Fenton street contact person Mr. Mabala contact number 016 362 0903 / 016 362 0126/ 082 820 5833
Gautrans Traffic	Contact person Mr. Du Plessis contact number 016 422 5214
Gautrans Roads	contact person Mr. D Hofman contact nr. 451 1047
Post Office	Contact person Ms. Potgieter Technical Division tel: 016 362 0782
Correctional Services:	Situating Groen Punt contact person E Sekele 016 370 2270 Leeuhof contact person Mr. Mohlathi: 016 450 1051

*Abbreviations:	<table style="width: 100%; border-collapse: collapse;"> <tr> <td style="width: 50%;">SAPS</td> <td>South African Police Services</td> </tr> <tr> <td>J.O.C</td> <td>Joint Operating Centre</td> </tr> <tr> <td>IDP</td> <td>Integrated Development Plan</td> </tr> <tr> <td>i.e</td> <td>in example</td> </tr> <tr> <td>a.s.a.p</td> <td>as soon as possible</td> </tr> <tr> <td>MM</td> <td>Municipal Manager</td> </tr> </table>	SAPS	South African Police Services	J.O.C	Joint Operating Centre	IDP	Integrated Development Plan	i.e	in example	a.s.a.p	as soon as possible	MM	Municipal Manager
SAPS	South African Police Services												
J.O.C	Joint Operating Centre												
IDP	Integrated Development Plan												
i.e	in example												
a.s.a.p	as soon as possible												
MM	Municipal Manager												

ROAD AND RAIL NETWORK

The N1 highway is running on the border of Midvaal at Eikenhof, Doringkuil. The R59 highway the R54, R501 and the R82 are passing through the municipal area, the railway line between Vereeniging and Johannesburg is running through the municipal area. (Hazmat incidents are of great concern on highway as well as railway).

Midvaal is the main beacon for Oliver Thambo Airport for all external flights.

ASSISTANCE AGREEMENTS

The agreements we have with the following areas are verbally. In the South we have Sedibeng, in the West we have Emfuleni and KiblerPark. North is Ekhuruleni consisting off Alberton, Thokoza and Palmridge. In the East is Lesedi. Assistance will comment with a telephonic request to the head of the different stations closest to the incident from a call of the head of the Fire Department.

SUPPORT / ASSISTANCE

Sedibeng District Council Disaster Management.

Manager: Mr. Pieter Nieuwenhuizen Tel: cell: 082-901-5726

City Paving - Mini grader and Trucks - Ian Goslit 082 447 1473

Lichenry – Back actors – Graders – Engineering Midvaal 016 360 7606 Engineering Department

EMERGENCY HOSPITALS

Chief professional Nurse: Ms C. Ackerman

73 JG Strydom Street, Rensburg, Heidelberg. A/h tel: 016-341-2449

Snr Environmental Health Practitioner: Mr E. Pretorius

22 Rissik Street, Heidelberg. A/h tel: 016-341-7282

Medi Clinic 016 440 5000

Medi Cross 016 454 7025

Kopanong Hospital 016 428 7000

TEACHING INSTITUTIONS / Potential Temporary Shelter
--

High Schools:

Dr. Malan 016 362 0610

Meyerton High 016 303 2015

Destinata 016 362 0546

Primary Schools:

Dr. Verwoerd 016 362 0105

Voorwaarts 016 364 1221

Republiek 016 363 0721

Daleside Primary 016 365 000

De Deur Primary 016 590 1045

Pre- Schools

Disa	016 362 0731
Cosmos	016 362 4323
Hand in Hand	016 362 3532

Other Support Institutions

Mooi Hawens (Meyerton East)	
Salem Faith Centre (Glen Donald)	
Sicelo early learning center	073 151 6562 / 072 550 4063
Bus Services Billy Christie	016 362 4832

Churches / Potential Temporary Shelter

NG Church (Meyerton Central)	016 362 0864
NG Church (Meyerton East)	016 364 1484
NG Church (Meyerton South)	016 363 0688
NG Church (De Deur)	076 135 6213
Assemblies of God H.O.K	016 366 1913/14
Assemblies of God Glen Donald	082 800 1026 / 082 411 4897
Midvaal Christian Centre	082 602 8435
Meyerton Town Hall	016 630 7400
Rothdene Hall	016 360 7400
White House Sicelo	073 728 7800
Old Apostolic Church (Noldick)	087 720 7839

Businesses / Food Stores / Potential Food Suppliers
--

Pick and Pay Golf Park	016 362 1268
Pick and Pay Centre	016 362 3760
Checkers Centre	1420
Spar Centre	016 362 0860
South-end Centre	016 363 0511
Hi Performance	016 366 1398
Voer & Saad	016 362 1018

Areas

As per IDP document of which this plan forms a part of.

Population

As per IDP document of which this plan forms a part of.

Topography

As per IDP document of which this plan forms a part of.

History and Historical Places

Airfield: (Midvaal District Municipality Competency)

Operated by: Franco Pattelli Tedderfield Air park

Contact: Johan Tel: 011-949-1803

Cell: 082-818-2804 (24Hrs)

E-mail:

<u>Grid Reference:</u>	<u>ICAO</u>	<u>Runways</u>	<u>Alt.ft</u>	<u>VOR</u>
S26.21.07.2 / E27.58.08.4S	FATA	11 / 29 / L/R	5200ft	N/A
<u>Radio:</u>	<u>Afgas</u>			
125.8	YES			

Remarks: Min Overfly 6500ft

Runway 29R11L =Hard surface 1100meters

Runway 29L/11R = Grass surface 1000 meters

Two runways = 1Grass and 1 hard surface

Airfield electrified Fence

Next to R550 Grassmere road Midvaal

WARNINGS A-B-C-D AND PROCEDURES
--

Core functions during Large Scale Emergencies / Disasters

There is a magnitude of functions necessary to manage disasters properly and effectively. The following functions are some of the key areas that need to be considered:

1. **Warning**
2. **Direction and Control**
3. **Public Information**
4. **Evacuation**
5. **Patient / Victim care**
6. **Emergency Services**
7. **Resource management**
8. **Search and rescue**
9. **Media liaison**
10. **Declaration of disasters and the sourcing of fund**

Reactive Response

WARNINGS

A-WARNINGS: This is the first warning of an emergency situation. All services and personnel to be placed on standby.

PROCEDURE

1. Report is received
2. The instruction is given by the Head of Disaster Management / MM
3. Departmental Heads activate their respective departments/ committees/ organizations to be on standby.
4. No member of civil protection may leave the Municipal area without the direct permission from his immediate supervisor.

B- WARNINGS: This is a Disaster of limited consequences and relatively small intensity. All key personnel must report for the emergency.

PROCEDURE

Fire and Rescue Services will report the emergency to the Senior Officer on duty who will respond and report to the Chief of Fire and Rescue and Operational Commander Emergency Medical Services. The Chief Fire Officer will report the emergency to the Executive Director Protection Services.

The Following services will respond to the emergency / disaster area immediately if necessary:

- a. Fire and Rescue Services / Midvaal Local Municipality
- b. Emergency Medical Services / Sedibeng District Municipality.
- c. Traffic Control / Midvaal / Gautrans.
- d. Administrative team.
- e. Manager Engineering Services.
- f. Medical teams / Doctors, Nurses and other support services i.e. Medical and Trauma Helicopter Services as needed.
- g. Administrative team must notify hospitals.

The person or persons arriving on the scene first must establish a forward command post. This person should ideally stay in command of the scene as he / she has all the relevant information. All other services must report the forwarding command post.

This person will also be the link between the JOC and operational persons. (Must get a Radio a.s.a.p. / Engineering Services?)

(Place a Traffic cone / bollard on the roof of car)

C-WARNINGS: A Disaster that involves the entire Midvaal area.

The entire Disaster Management Team Must be activated including Disaster Management Head of the Sedibeng District and his / her team.

PROCEDURE

Fire and Rescue Services Control will report the emergency to the Senior Officer on duty who will respond immediately, report to the Chief Fire Officer and Operational Commander Emergency Medical Services. The Chief Fire Officer will report the emergency to the Executive Director Protection Services and the Disaster Management Heads of Midvaal Local Municipality and the Sedibeng District Municipality will respond to the emergency immediately.

The responsible official organizes the control centre and the necessary Management officials to man the control centre.

The Operations Divisional Officer Fire and Rescue (Midvaal Local Municipality) and the Advanced Life Support Officer (Sedibeng District Council) performs the necessary triage and priorities and act accordingly.

The required Heads of Department activate their respective emergency plans.

The Heads of Disaster Management Midvaal Local Municipality and Sedibeng District Municipality in- community prioritises actions and activities.

At the scene the person who first arrives places a traffic cone on his her car roof and establishes a Forward Command Post where he / she can be the link between the scene and the in-committee members reporting at regular intervals.

Responsible Officials co-ordinate their respective services from the control centre.

D- WARNINGS: The abolishment of the Emergency situation / Repairs and Salvage.

PROCEDURE

The heads of Disaster Management notifies all parties of the abolishment of the Emergency situation.

Management decides on action to be taken for Repairs and Salvage to return the situation to normal.

DEFINITIONS

Development is a process by which a nation's capacities are increased and its vulnerability reduced.

Disaster is any event that happens with or without warning causing or threatening death or injury, damage to property, infrastructure or the environment or disruption to the community, which exceed the ability of an affected society to cope using only its own resources.

Disaster Management is the body of policy and administrative decisions and operational activities, which pertain to prevention, preparedness, response, recovery, and rehabilitation of a disaster at all levels of government.

Emergency is a situation where there are serious and immediate threats to life, property, infrastructure and the environment. Whereas a disaster is bound by a specific period in which lives and essential property are immediately at risk, an emergency can encompass a more general period in which:-

- ❑ There is a clear and marked deterioration in the coping abilities of a group or community; or
- ❑ Coping abilities are only sustained by unusual initiatives by the group or community or by external intervention.

Hazards are threats of life, well being, material goods and environment from extremes of natural processes or technology.

Hazard Mapping The process of establishing geographically where certain events are likely to occur.

A Major Incident is any emergency that requires the implementation of special arrangements by one or more of the emergency services, or local authority.

Mitigation Action taken (usually in the form of specific programs) to reduce the effects of a disaster on a nation or community. (The term normally implies that, whilst it may be possible to prevent some disasters effects, other effects will persist and can be modified to reduce if appropriate action is taken).

Preparedness Measures, which enable government, communities and individuals to respond rapidly and effectively to disaster situations.

Response is the sum total of action taken by residents and institutions in response to disaster.

Recovery is the rehabilitation and reconstruction activities necessary to enable a rapid return to normality.

Risk is the expected losses (lives lost, persons injured, damage to property, disruption of economic activity and environmental losses) due to any hazard.

Risk mapping the process to identifying high-risk areas by correlating a hazard to the terrain and the probability and impact if a occurrence.

Vulnerability The degree to which an individual, family, or community or region is at risk from suffering serious misfortunes following extreme events.

Notifiable diseases in the Republic of South Africa

Anthrax
Brucellosis
Cholera
Diphtheria

Haemorrhagic fever disease of Africa: Congo Fever, Dengue Fever, Ebola Fever, Lassa Fever, Marburg Fever, Rift Valley Fever.

Lead Poisoning

Leprosy

Leptospirosis

Malaria

Measles

Meningococcal Meningitis (including Meningococcaemia)

Paratyphoid Fever

Plaque

Poisoning from agricultural stock remedy registered in terms of the Fertilizers, Farm, Agricultural Remedies and Stock Remedies Act, No 36 of 1947.

Poliomyelitis

Primary malignancy of the bronchus, lungs and pleura

Psittacosis

Rabies

Smallpox

Tetanus

Toxoplasmosis

Trachoma

Trypanosomiasis

Tuberculosis (all forms of tuberculosis)

Typhoid Fever

Typhus Fever (epidemic louse-bourne typhus fever, endemic rat flea typhus fever)

Viral Hepatitis A and B and undifferentiated

Yellow Fever.

Primary Prevention Sheets for the above Diseases has been forwarded to Emergency Departments namely: Fire and Rescue as well as Ambulance Services. Additional copies are available from the offices of the Health Section.

Identification of Equipment and Manpower Resources

Equipment

Own Resources
Inhabitants
Factories, Industry and Private Institutions
Neighbouring Councils
District, Provincial and State Departments

Manpower

Employees
Volunteers
SAPS
SANDF / Commando
District, Provincial and State Departments
Trade and Industry.

Note:

All Heads of Departments must ensure that a plan exists in their respective departments i.e. procedures, staff / support / utensils / emergency equipment like torches, two way radios, blankets, emergency accommodation etc. that could be made available in the event of a disaster.

This document is will change as and when further updating information becomes available.

The plan is constantly updated as information becomes available from other role players.